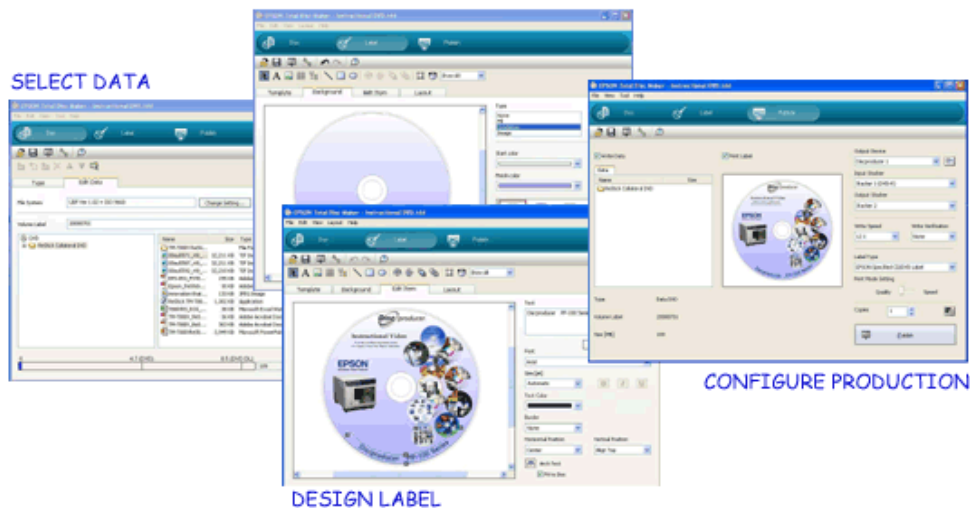


Software

Discproducer comes with all the software you need to get the job done. Discproducer's easy-to-use Total Disc Maker Software includes disc editing, label editing and publishing functions. Simply select your data, design the label, configure the run, click "Publish" and you are done. Best of all, you don't have to be an expert to use the software. All it takes is a few easy steps.



1. Select Data

Epson's Disc Editing Software is easy to use. Simply select the media format, then drag, drop, and burn.

2. Design the Label

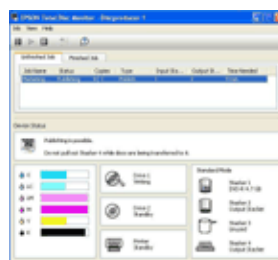
Use your own design or start with one of the many pre-defined templates and images provided. Then use the label editing tools to customize the label to your satisfaction. The preview display allows you to check your composition and save your work for easy retrieval in the future.

3. Configure Production

There are just a few steps before you're ready to publish. Epson's software leads you through the process, helping you to set the parameters such as the number of CDs and DVDs to be burned, the burning and print speed, the input/output trays for discs and print resolution. Then simply click "Publish" and your production run is underway.

4. Monitor Production

Epson's Total Disc Monitor Software keeps you informed about the status of all the important functions of the Discproducer as well as any current and pending jobs.



MONITOR PRODUCTION

Additional Software

The Total Disc Bridge Software allows software integrators and developers to use custom software applications for interfacing with the Discproducer.

Looking for the Epson Discproducer Software Development Kit? Click this link to go to the [Epson Discproducer SDK Request Form](#).